



INTERNATIONAL GEMOLOGICAL INSTITUTE

ELECTRONIC COPY

LABORATORY GROWN DIAMOND REPORT

LG550263015

LABORATORY GROWN DIAMOND REPORT

IGI LABORATORY GROWN DIAMOND IDENTIFICATION REPORT

December 12, 2022

IGI Report Number LG550263015

Description LABORATORY GROWN DIAMOND

Shape and Cutting Style PEAR BRILLIANT

Measurements 8.87 X 5.38 X 3.35 MM

GRADING RESULTS

Carat Weight 0.97 CARAT

Color Grade F

Clarity Grade VS 1

Cut Grade VERY GOOD

ADDITIONAL GRADING INFORMATION

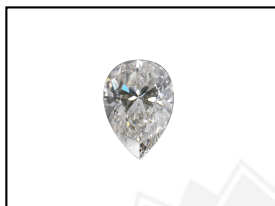
Polish VERY GOOD

Symmetry VERY GOOD

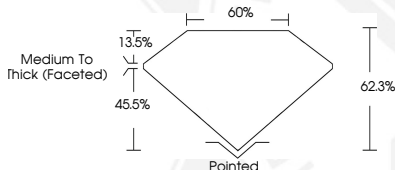
Fluorescence NONE

Inscription(s) LABGROWN (IGI) LG550263015

Comments: This Laboratory Grown Diamond was created by Chemical Vapor Deposition (CVD) growth process and may include post-growth treatment. Type IIa



LASERSCRIBESM
Sample Images Used



IGI LABORATORY GROWN DIAMOND ID REPORT

December 12, 2022

IGI Report Number LG550263015

PEAR BRILLIANT

8.87 X 5.38 X 3.35 MM

Carat Weight 0.97 CARAT

Color Grade F

Clarity Grade VS 1

Cut Grade VERY GOOD

Polish VERY GOOD

Symmetry VERY GOOD

Fluorescence NONE

Inscription(s) LABGROWN (IGI) LG550263015

Comments: This Laboratory Grown Diamond was created by Chemical Vapor Deposition (CVD) growth process and may include post-growth treatment. Type IIa

IGI LABORATORY GROWN DIAMOND ID REPORT

December 12, 2022

IGI Report Number LG550263015

PEAR BRILLIANT

8.87 X 5.38 X 3.35 MM

Carat Weight 0.97 CARAT

Color Grade F

Clarity Grade VS 1

Cut Grade VERY GOOD

Polish VERY GOOD

Symmetry VERY GOOD

Fluorescence NONE

Inscription(s) LABGROWN (IGI) LG550263015

Comments: This Laboratory Grown Diamond was created by Chemical Vapor Deposition (CVD) growth process and may include post-growth treatment. Type IIa



THIS DOCUMENT WAS PRODUCED WITH THE FOLLOWING SECURITY MEASURES: SPECIAL DOCUMENT PAPER, INK SCREENS, WATERMARK, BACKGROUND DESIGN, HOLOGRAM AND OTHER SECURITY FEATURES NOT LISTED AND DO EXCEED DOCUMENT SECURITY INDUSTRY GUIDELINES.

For terms & conditions and to verify this report, please visit www.igi.org