



LG468174368

LABORATORY GROWN DIAMOND REPORT

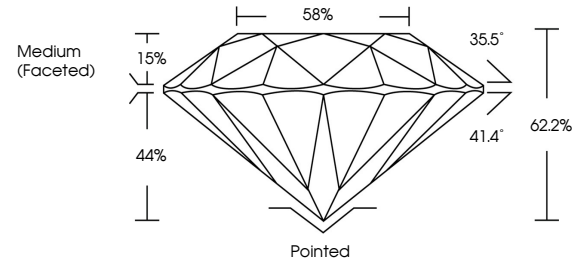
12/27/2020
IGI Report Number LG468174368
Shape and Cutting Style ROUND BRILLIANT
Measurements 6.97 - 7.01 x 4.35 mm

GRADING RESULTS
Carat Weight 1.30 CARAT
Color Grade I
Clarity Grade VS 1
Cut Grade EXCELLENT

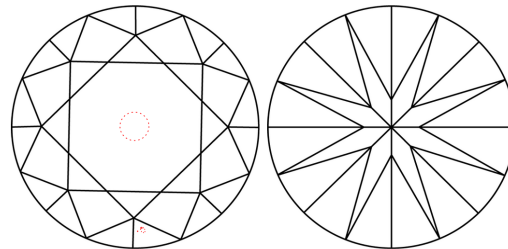
ADDITIONAL GRADING INFORMATION
Polish EXCELLENT
Symmetry EXCELLENT
Fluorescence NONE
Inscription(s) LABGROWN IGI LG468174368

Comments: This Chemical Vapor Deposition (CVD) laboratory grown diamond is classified as Type IIa.

PROPORTIONS



CLARITY CHARACTERISTICS



KEY TO SYMBOLS

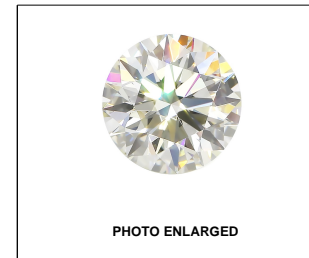
Red symbols indicate internal characteristics.
Green symbols indicate external characteristics.

GRADING SCALES

Table with 5 columns for Color Grading Scale (CL, NC, FT, VLT, LT) and Clarity (10x) Grading Scale (FL, IF, VVS, VS, SI, I). Color scale includes D-F, Near Colorless G-J, Faint K-M, Very Light N-R, and Light S-Z. Clarity scale includes Flawless Internally Flawless, Very Very Slightly Included, Very Slightly Included, Slightly Included, and Included.

The laboratory grown diamond described in this Report (Report) has been graded, tested, analyzed, examined and/or inscribed by International Gemological Institute (IGI). A laboratory grown diamond is one that has essentially the same chemical, physical and optical properties as a mined diamond, with the exception of being grown by man (a manufactured product). IGI employs and utilizes those techniques and equipment currently available to IGI, including, without limitation, 10X magnification, corrected triplet loupe, binocular microscope, master color comparison stones, non-contact optical measuring device, Diamond Sure™, Diamond View™, Spectrophotometer and such other instruments and/or processes as deemed appropriate by IGI. This Report includes advanced security features. A duly accredited gemologist or jeweler can advise you with respect to the importance of and interrelationship between cut, color, clarity and carat weight. THIS REPORT IS NEITHER A GUARANTEE, VALUATION, NOR APPRAISAL OF THE GEMSTONE DESCRIBED HEREIN. PLEASE REVIEW THE LIMITATIONS AND RESTRICTIONS SET FORTH ONLINE. FOR ADDITIONAL INFORMATION, IMPORTANT LIMITATIONS AND DISCLAIMERS, PLEASE GO TO WWW.IGI.ORG OR CALL 1-888-BUY-IGIS.

© INTERNATIONAL GEMOLOGICAL INSTITUTE, INC.

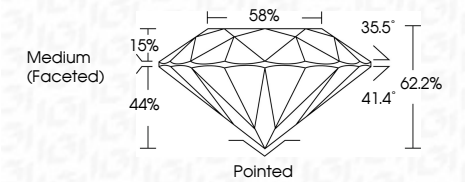


LABGROWN IGI LG468174368

LASERSCRIBE SM

12/27/2020
IGI Report Number LG468174368
Shape and Cutting Style ROUND BRILLIANT
Measurements 6.97 - 7.01 x 4.35 mm

GRADING RESULTS
Carat Weight 1.30 CARAT
Color Grade I
Clarity Grade VS 1
Cut Grade EXCELLENT



ADDITIONAL GRADING INFORMATION
Polish EXCELLENT
Symmetry EXCELLENT
Fluorescence NONE
Inscription(s) LABGROWN IGI LG468174368

Comments: This Chemical Vapor Deposition (CVD) laboratory grown diamond is classified as Type IIa.



IGI

12/27/2020
IGI Report No. LG468174368
ROUND BRILLIANT
Carat Weight 1.30 CARAT
Color Grade I
Clarity Grade VS 1
Depth 62.2%
Table 58%
Grade Medium (Faceted)
Culet Pointed
Polish EXCELLENT
Symmetry EXCELLENT
Fluorescence NONE
Inscription(s) LABGROWN IGI LG468174368
Comments: This Chemical Vapor Deposition (CVD) laboratory grown diamond is classified as Type IIa.